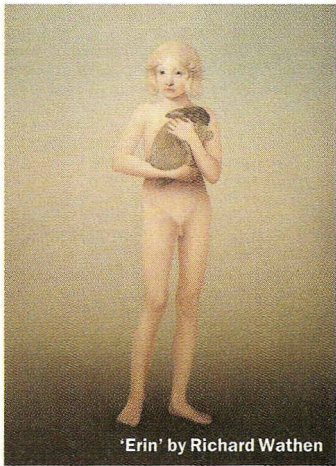


# Reviews

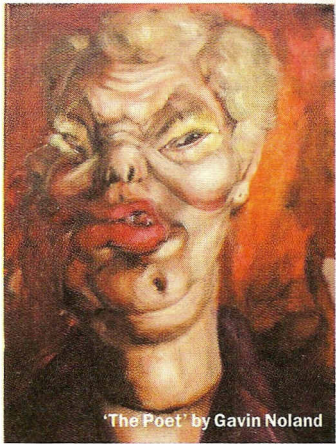


'Erin' by Richard Wathen

## Faux Realism II Rockwell East End

The second of two exhibitions (part one was at the Royal Academy Pump House Gallery), this mix of painting and sculpture by seven artists is as much surreal as faux real. David Kefferd, who is also showing at 1000000 mph, creates painted sculptures of hybrid creatures from wood, found objects and layers of paper and cloth. Two human-scale, headless and faceless creatures are included; while the one on four stilt legs is animal-like, standing upright on three shoe-clad feet, the other seems more human – but their stance makes both seem awkward or ill at ease.

Hovering between a life study and something more erotic, the naked androgynous figure in Gavin Tremlett's painting floats in a sea of orange while the upper part of its face is obscured by a band of grey that sweeps across the top of the canvas. Richard Wathen's painting 'Erin' best fulfils the exhibition's title. A naked boy with blond curls and a cherubic face straight out of a Renaissance painting stands clutching a grey rabbit to his chest. The fact that the painting is hung in a roped-off alcove adds to the feeling that the work, which seems somehow familiar, is also very valuable. *Helen Sumpter*



'The Poet' by Gavin Noland

### ART

Listings	56
Critics' Choice	56
Events	60